



A LEGACY OF FINE LIVING

K-RERA/PRJ/TVM/101/2022
www.rera.kerala.gov.in



MOVE IN TO THE FRIENDLY NEIGHBOURHOOD

VARMA
SREEKARYAM

LUXURY APARTMENTS

SREEKARYAM | THIRUVANANTHAPURAM



Permit No. UE2/BA/13/20, UE2/197/20

K-RERA/PRJ/TVM/101/2022

www.rera.kerala.gov.in



RED BRICKS
CONSTRUCTION



LIVE PEACEFULLY


Varma Homes presents Varma Sreekaryam Luxury Apartments in the holy abode of Sreekaryam, Trivandrum. Comes with 26 units of 2 BHK apartments and 3 BHK apartments. basement, ground and first floor are completely allocated for parking. The 2nd and 3rd floors are allotted for commercial purpose and 4th to 10th residential purpose. For you with all needs for a peaceful plush living. Experience a pleasant lifestyle at one of Trivandrum's calmest locale.

VARMA
SREEKARYAM

LUXURY APARTMENTS

SREEKARYAM | THIRUVANANTHAPURAM





MOVE PEACEFULLY

Sreekaryam, is located at the key locale of Trivandrum city away from the hassles and bustles of the urbs. Where you can experience a peaceful living, connecting major spots of the city. Hospitals, Educational institutions, Economic Centres everything that you need to live happily and peacefully are within easy reach.



FEEL THE GRANDNESS

Get ready to indulge in the grandness at Varma Sreekaryam.

Our amenities include

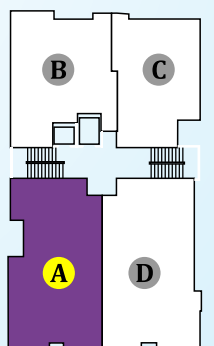
- | Rooftop Swimming Pool |
- | Multi Recreation Hall/Club House |
- | Health Club |
- | Roof Top Children's Play Area |
- | Roof Top Party Area |
- | Terrace Garden |
- | Access Control System |
- | Video Door Phone |
- | Piping for Centralised Gas System |
- | Fully Automatic Lifts |
- | Provision for EV Charging |
- | Biodegradable Waste Management System and Incinerator |
- | Lift with ARD System |
- | Rubber Column Corner Guards with Reflective Stickers in the Parking Area |
- | Water Treatment System |
- | Solar Energy Utilization in Few Points |
- | Intercom Facility |
- | Surveillance Camera |
- | Fire Fighting System |
- | 24 Hr Power & Water Supply |
- | Sewage Management System |
- | Caretaker's Room |
- | Drivers Room |
- | Car Wash Area |
- | Fully Furnished GF Lobby |
- | Shopping Trolleys For Inhouse Use |
- | Guest Suite Room |
- | 24x7 Security |
- | Ample Parking Space |
- | Indoor Games Area |



TYPE A - 3 BHK (4th Floor)

Super Builtup Area - 1574 sqft | RERA Carpet Area - 1015 sqft | Balcony Area - 75 sqft
| Open Terrace Area - 29 sqft

Furniture layout and fixtures are indicative | Dimensions may vary slightly during construction | All dimensions are in centimetres

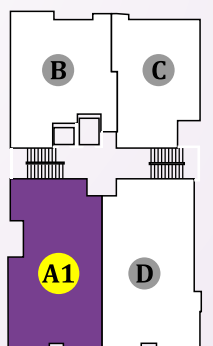




TYPE A1 - 3 BHK (5th - 9th Floor)

Super Builtup Area - 1574 sqft | RERA Carpet Area - 1015 sqft | Balcony Area - 75 sqft

Furniture layout and fixtures are indicative | Dimensions may vary slightly during construction | All dimensions are in centimetres

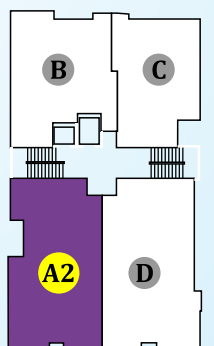




TYPE A2 - 3 BHK (10th Floor)

Super Builtup Area - 1569 sqft | RERA Carpet Area - 1009 sqft | Balcony Area - 75 sqft

Furniture layout and fixtures are indicative | Dimensions may vary slightly during construction | All dimensions are in centimetres

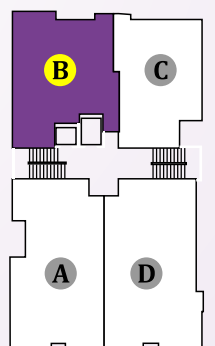




TYPE B - 2 BHK (4th - 8th Floor)

Super Builtup Area - 1264 sqft | RERA Carpet Area - 806 sqft | Balcony Area - 52 sqft

Furniture layout and fixtures are indicative | Dimensions may vary slightly during construction | All dimensions are in centimetres

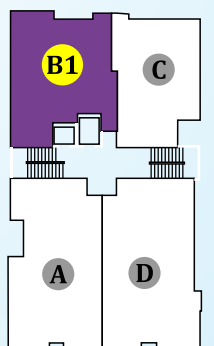




TYPE B1 - 2 BHK (9th Floor)

Super Builtup Area - 1235 sqft | RERA Carpet Area - 788 sqft | Balcony Area - 52 sqft

Furniture layout and fixtures are indicative | Dimensions may vary slightly during construction | All dimensions are in centimetres





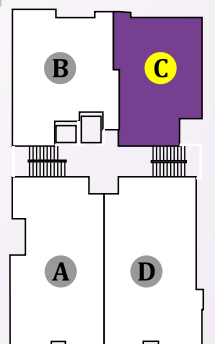
↑
ENTRY

TYPE C - 2 BHK (4th Floor)

Super Builtup Area - 1074 sqft | RERA Carpet Area - 699 sqft | Balcony Area - 38 sqft

Open Terrace Area - 39 sqft

Furniture layout and fixtures are indicative | Dimensions may vary slightly during construction | All dimensions are in centimetres

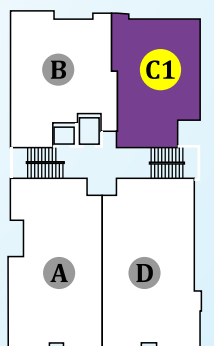


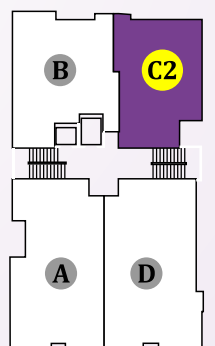


TYPE C1 - 2 BHK (5th - 8th Floor)

Super Builtup Area - 1074 sqft | RERA Carpet Area - 699 sqft | Balcony Area - 38 sqft

Furniture layout and fixtures are indicative | Dimensions may vary slightly during construction | All dimensions are in centimetres





TYPE C2 - 2 BHK (9th Floor)

Super Builtup Area - 988 sqft | RERA Carpet Area - 639 sqft | Balcony Area - 38 sqft

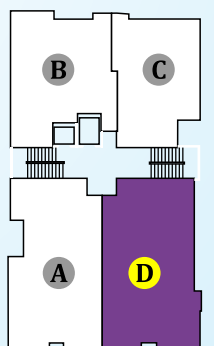
Furniture layout and fixtures are indicative | Dimensions may vary slightly during construction | All dimensions are in centimetres



TYPE D - 3 BHK (4th Floor)

Super Builtup Area - 1687 sqft | RERA Carpet Area - 1094 sqft | Balcony Area - 74 sqft

Furniture layout and fixtures are indicative | Dimensions may vary slightly during construction | All dimensions are in centimetres

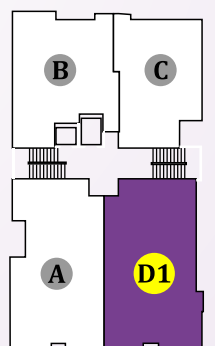




TYPE D1 - 3 BHK (5th Floor)

Super Builtup Area - 1640 sqft | RERA Carpet Area - 1070 sqft | Balcony Area - 74 sqft
Open Terrace Area - 55 sqft

Furniture layout and fixtures are indicative | Dimensions may vary slightly during construction | All dimensions are in centimetres

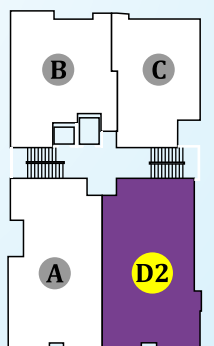




TYPE D2 - 3 BHK (6th - 8th Floor)

Super Builtup Area - 1640 sqft | RERA Carpet Area - 1070 sqft | Balcony Area - 74 sqft

Furniture layout and fixtures are indicative | Dimensions may vary slightly during construction | All dimensions are in centimetres

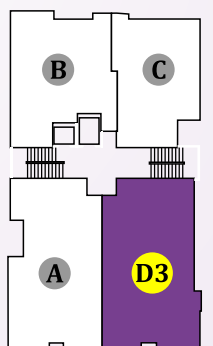




TYPE D3 - 3 BHK (9th Floor)

Super Builtup Area - 1604 sqft | RERA Carpet Area - 1044 sqft | Balcony Area - 74 sqft

Furniture layout and fixtures are indicative | Dimensions may vary slightly during construction | All dimensions are in centimetres

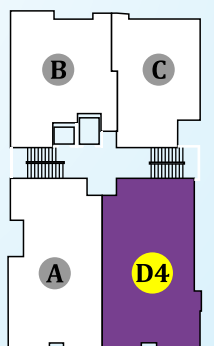


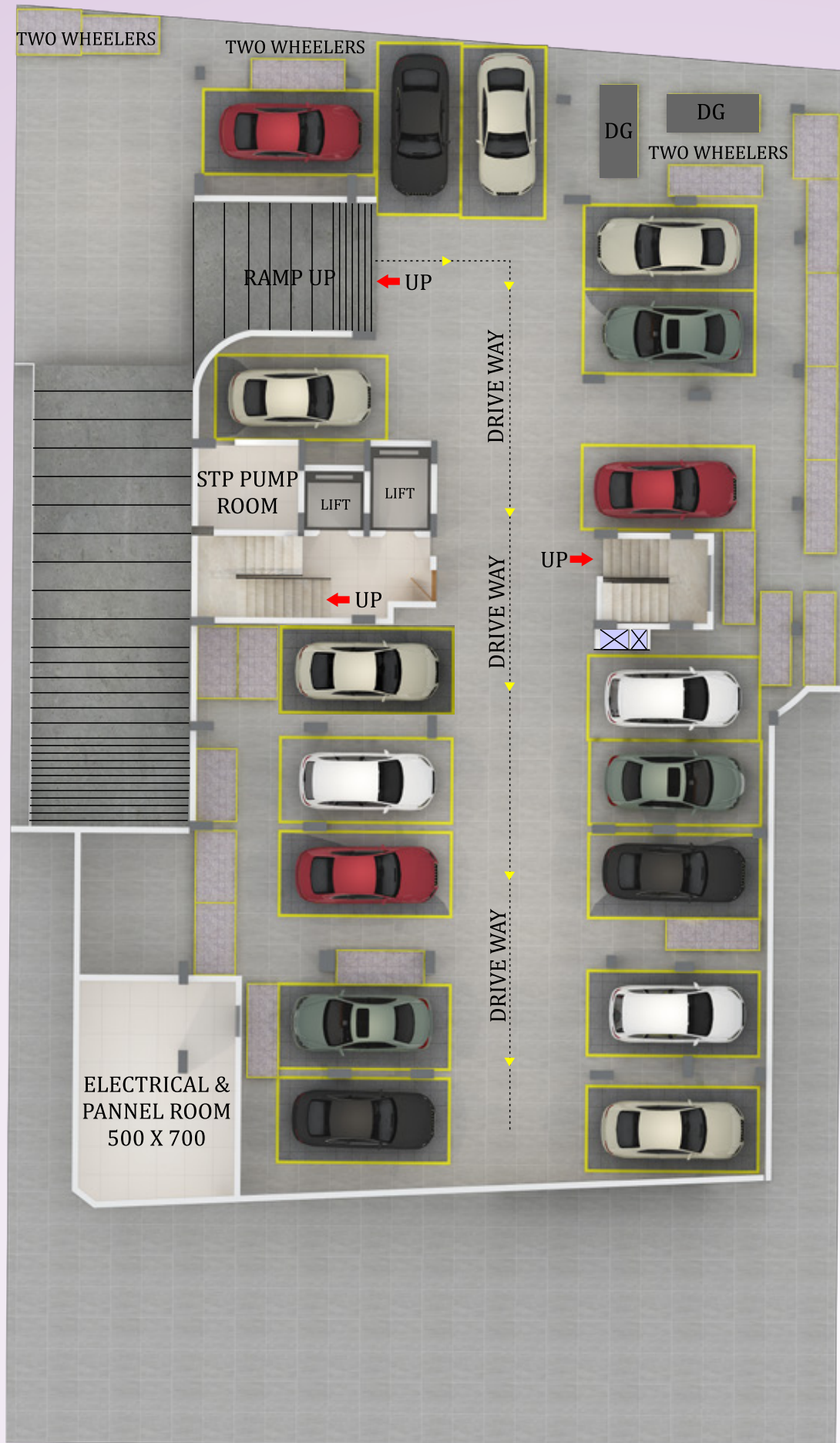


TYPE D4 - 3 BHK (10th Floor)

Super Builtup Area - 1489 sqft | RERA Carpet Area - 966 sqft | Balcony Area - 72 sqft
Open Terrace Area - 12 sqft

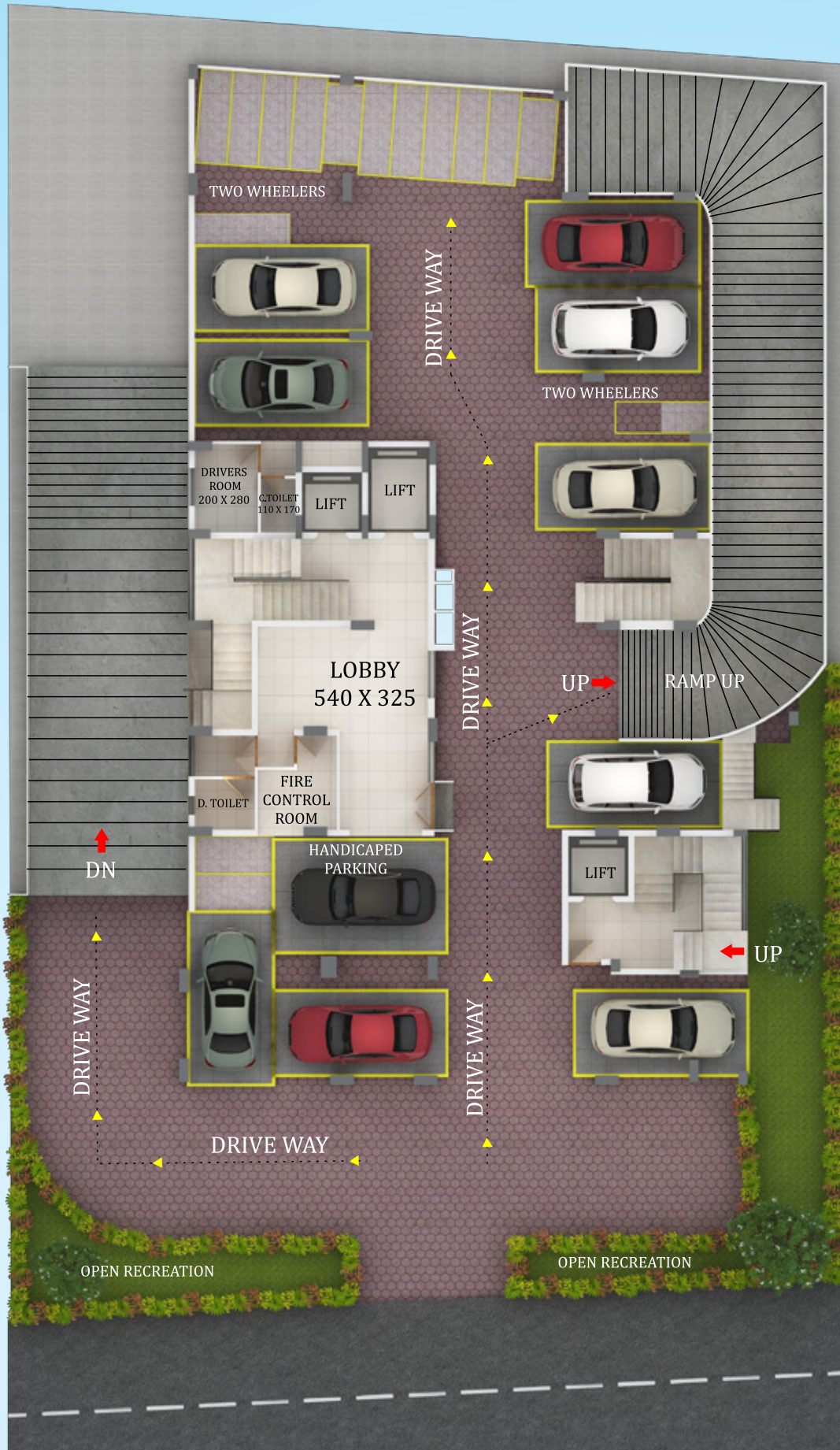
Furniture layout and fixtures are indicative | Dimensions may vary slightly during construction | All dimensions are in centimetres





BASEMENT FLOOR

Furniture layout and fixtures are indicative | Dimensions may vary slightly during construction | All dimensions are in centimetres



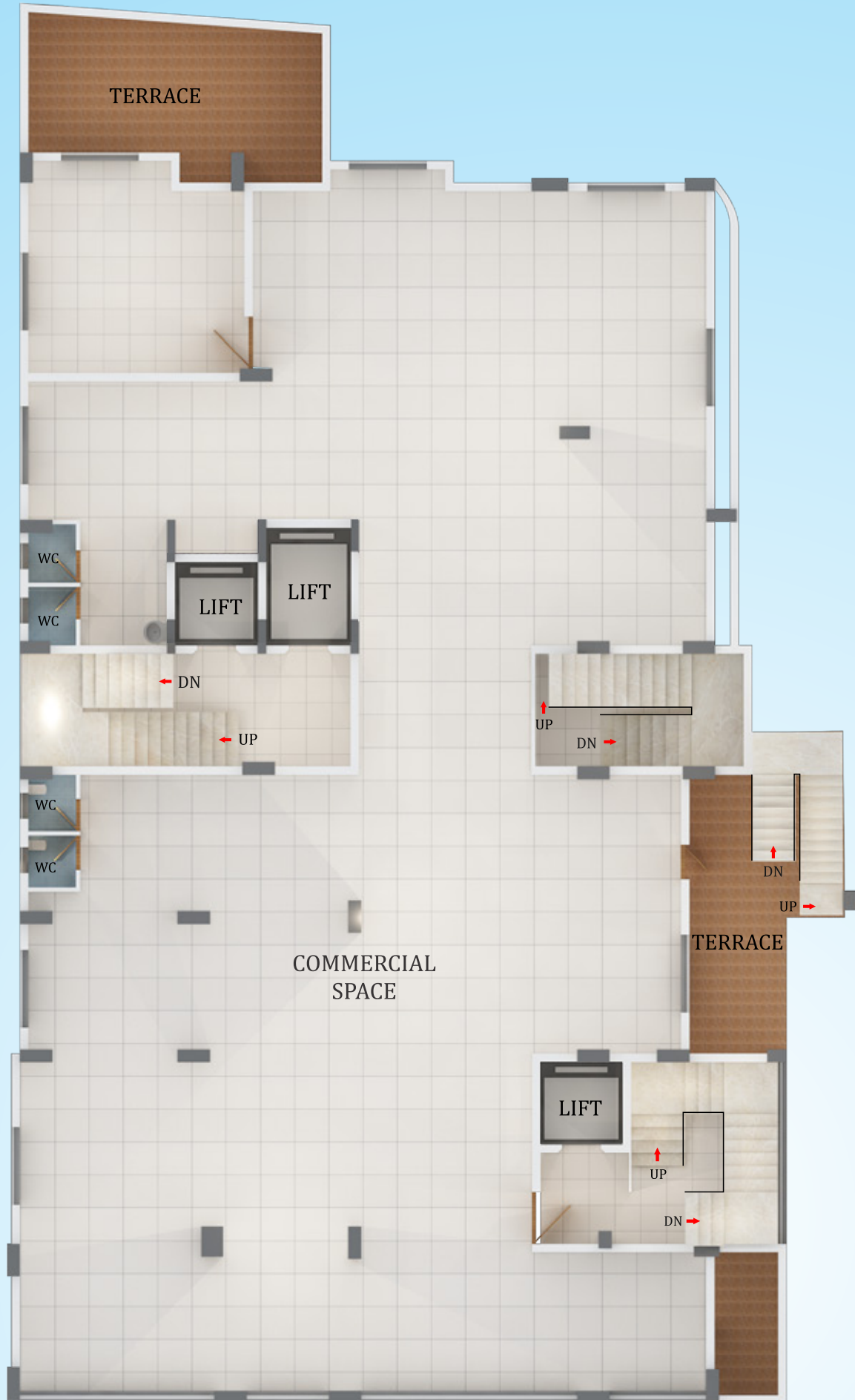
GROUND FLOOR

Furniture layout and fixtures are indicative | Dimensions may vary slightly during construction | All dimensions are in centimetres



FIRST FLOOR

Furniture layout and fixtures are indicative | Dimensions may vary slightly during construction | All dimensions are in centimetres



SECOND FLOOR

Furniture layout and fixtures are indicative | Dimensions may vary slightly during construction | All dimensions are in centimetres



THIRD FLOOR

Furniture layout and fixtures are indicative | Dimensions may vary slightly during construction | All dimensions are in centimetres



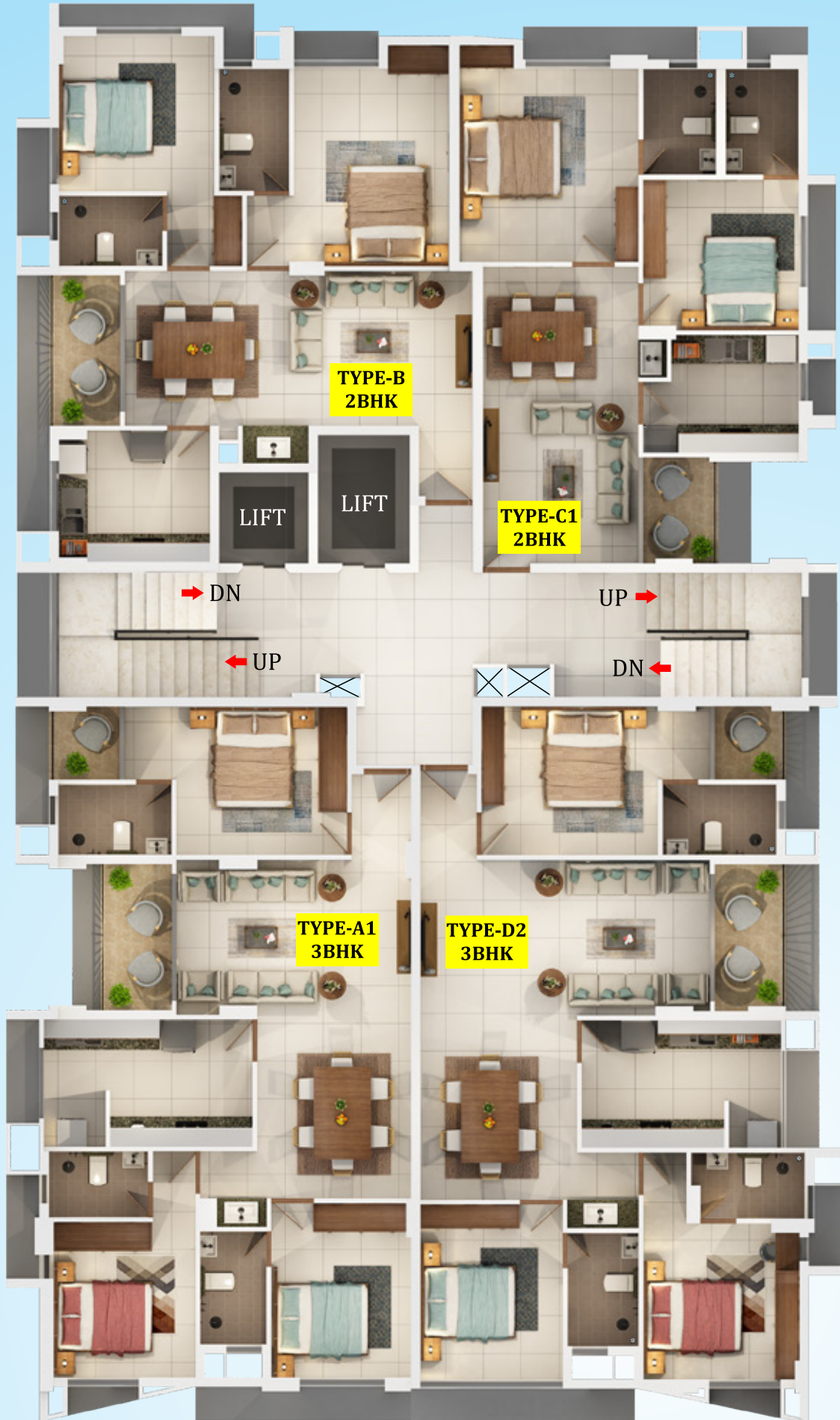
FOURTH FLOOR

Furniture layout and fixtures are indicative | Dimensions may vary slightly during construction | All dimensions are in centimetres



FIFTH FLOOR

Furniture layout and fixtures are indicative | Dimensions may vary slightly during construction | All dimensions are in centimetres



TYPICAL FLOOR (6th - 8th Floor)

Furniture layout and fixtures are indicative | Dimensions may vary slightly during construction | All dimensions are in centimetres



NINTH FLOOR

Furniture layout and fixtures are indicative | Dimensions may vary slightly during construction | All dimensions are in centimetres



TENTH FLOOR

Furniture layout and fixtures are indicative | Dimensions may vary slightly during construction | All dimensions are in centimetres



TERRACE FLOOR

Furniture layout and fixtures are indicative | Dimensions may vary slightly during construction | All dimensions are in centimetres



SWIMMING POOL

Furniture layout and fixtures are indicative | Dimensions may vary slightly during construction | All dimensions are in centimetres



LOCATION MAP



DISTANCE FROM VARMA SREEKARYAM

Education

- ICAR-Central Tuber Crops - 150 M
- Loyola School 800 M
- College of Engineering (CET) - 1.7 Km
- Lecole Chempaka - 2.3 Km
- S N College Chempazhantny - 2.8 Km
- Karyavattom Campus - 4.3 Km
- Kendriya Vidyalaya - 5.5 Km
- MGM Central Public School - 5.9 Km

Shopping

- Nilgiri's - 850 M
- World Market - 6.2 Km
- Lulu Mall - 7.0 Km

Entertainment

- Aakkulam Tourist Village - 3.9 Km
- Taurus Downtown - 5.6 Km

Technology

- UST Global - 5.7 Km
- Infosys - 5.8 Km
- Technopark - 5.8 Km

Hospitals

- SUT Royal Hospital - 2.3 Km
- Govt. Medical College - 3.5 Km
- CG Hospital - 4.6 Km
- KIMS Health Hospital - 5.0 Km

Others

- Elamkulam Sree Mahadeva Temple - 400 M
- Mosque - 400 M
- Church - 500 M
- Central Railway Station - 9.5 Km
- Sreekaryam Police Station - 750 M
- Greenfield International Stadium - 4.2 Km
- International Airport - 8.8 Km




VARMA HOMES





SPECIFICATIONS

STRUCTURE

Reinforced cement concrete framed structure with Red bricks for partition walls in apartment units and solid blocks for commercial. Earthquake resistant for Zone 3

FLOORING

High quality vitrified tiles with vitrified skirting for living, dining bedrooms and kitchen. Antiskid/matt tiles for, balcony and toilets.

KITCHEN

Kitchen counter with polished granite slab and single bowl stainless steel sink with drain board and dado tile above the counter upto 2 ft height.

TOILETS

Toilet walls with tiles upto a height of 7 feet and CP fittings and sanitary wares of premium quality.

DOORS AND WINDOWS

Front Door : Pre Hung door with designer veneer

Internal Doors : Pre Hung doors with architrave

Windows : UPVC sliding windows with window grills

PAINTING

Putty and emulsion for internal walls/Ceiling. 100% acrylic emulsion for the external walls.

ELECTRICAL

Concealed conduit wiring with adequate light and fan points, 6/16A socket points controlled by ELCBs and MCBs with independent KSEB meters for each flat. Modular type switches.

PLUMBING

Concealed works with CPVC, open works with ASTM and PVC of premium brands

TELEPHONE

Telephone point in Living room and master bedroom

TV POINT

TV point in living room and master bedroom

AC

AC provision in all bedrooms

WATER HEATER

Water heater provisions in all bedroom toilets

GENERATOR

Generator back-up for common facilities and designated points in each apartment upto 1000 W through ACCL




VARNA HOMES





Welcome to the Varma Family!

At Varma Homes, we strive to construct happiness throughout your time with us and beyond. Whatever your concern is – interior furnishing, repairs, renovations, rentals, resale – consider it solved! Be assured, that we are just a call away. We are always happy to extend a helping hand.

Here's What Varma Care Offers:

Creative Interiors

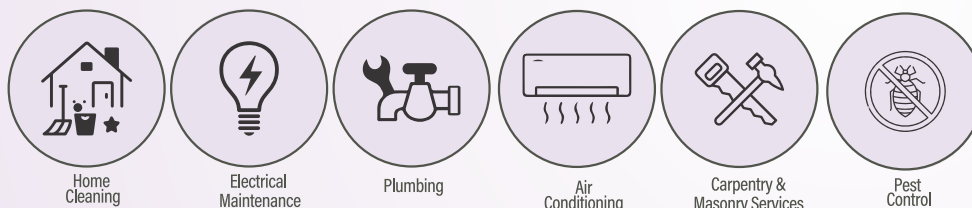
We offer interiors with creative designs, impeccably executed as per your taste and space, and always delivered on time. Our experienced interior designers will give your home that extra allure that is designed to impress.

Reliable After Sales Services

With Varma Homes, we continue to be a team even after you move into your new home. After-sales service is a part of our culture, and we ensure that your repair and maintenance needs are taken care of without any hassle.

Wide Range of Maintenance and Repair Services.

Our M & S division offers unique service options and a wide range of utility care ranging from cleaning to plumbing and everything in between.



COMPLETED AHEAD OF SCHEDULE



Sold out & K-RERA Registration not required
Permit No. EYP-2/COC/EYP/1700/14



Sold out & K-RERA Registration not required
Permit No. PW2-BA204/16-17



Sold out & K-RERA Registration not required
Permit No. PW2-BA(20551)/2017



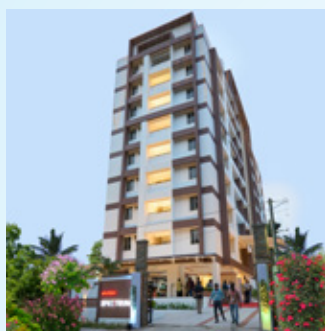
Sold out & K-RERA Registration not required
Permit No. PW2-BA162/17-18



K-RERA/PRJ/045/2021
Permit No. PW2-BA(22667)/2017



K-RERA/PRJ/362/2020
Permit No. E8/BA/422/2013



K RERA/PRJ/091/2020
Permit No. A7-2123/17



K-RERA/PRJ/093/2020
Permit No. BPRL01/2021/1180



ONGOING PROJECTS



VARMA
harmony
LUXURY APARTMENTS
EDAPPALLY | KOCHI

K-RERA/PRJ/ERN/028/2023
Permit No. EYP2/130/6053/2022



VARMA
Connekt
LUXURY APARTMENTS
VENNALA, KOCHI

K-RERA/PRJ/ERN/014/2021
Permit No. EYP1/48/COC/EYP/127/17



VARMA
NORTHLIGHT
2 & 3 BHK LUXURY APARTMENTS
TRIPUNITHURA | COCHIN

K-RERA/PRJ/ERN/021/2021
Permit No. PW2/BA267/20-21/12648/20



VARMA
Imperial
LUXURY APARTMENTS

VAZHAKKALA | KOCHI

K-RERA/PRJ/058/2021
Permit No. BA-923/19-20



VARMA
PRIME
LUXURY APARTMENTS
VYTTILA | KOCHI

K-RERA/PRJ/364/2020
Permit No. PW2/BA102/20-21/8038/20



RED BRICKS
CONSTRUCTION

Dr. Poo's **VARMA**
LEGACY
LUXURY APARTMENTS
POOJAPPURA | THIRUVANANTHAPURAM

K-RERA/PRJ/076/2021
Permit No. E8/BA/42723/2020



VARMA
suburban
LUXURY APARTMENTS
KAZHAKKOOTAM | THIRUVANANTHAPURAM

K-RERA/PRJ/TVM/076/2022
Permit No. A1-BA(82320)/2022



VARMA
Signature

Luxury Apartments
Ancherychira, Thrissur

K-RERA/PRJ/008/2021
Permit No. OLRPWBA(256179)/2019

NEW LAUNCH



RED BRICKS
CONSTRUCTION

VARMA
**URBAN
HEIGHTS**

KADAVANTHRA | KOCHI

K-RERA/PRJ/ERN/136/2022
Permit No. KRP2-486/19



VARMA
FICUS
LUXURY APARTMENTS
PALARIVATTOM | KOCHI

K-RERA/PRJ/ERN/073/2023
Permit No. EYP1/81/4446/22 DTD 25/10/2022



VARMA
Rhythm
LUXURY APARTMENTS
ERLOOR | KOCHI

K-RERA/PRJ/ERN/117/2022
Permit No. PW2/BA-395/21-22(PW2-527/22)



A LEGACY OF FINE LIVING

Talk to us: +91 9645 88 3333

VARMA HOMES PRIVATE LIMITED

✉ mail@varmahomes.com
www.varmahomes.com

Corporate Office: G-129, 55/938(A),
3rd Cross Road, Panampilly Nagar,
Cochin 682036. Ph: 0484 2980258

Regional Office: Thiruvananthapuram-TC 9/2763/3
Vysakh, CSM Nagar 289, Edapazhanji,
Sasthamangalam 695010 Ph: 0471 2319258

Thrissur - Puthur Road,
Chelakkottukara 680005,
Ph: 0487 2446258

**KOCHI
THRISSUR
THIRUVANANTHAPURAM
KOZHIKODE**



CREDAI

Scan QR Code to visit
Sreekaryam webpage

